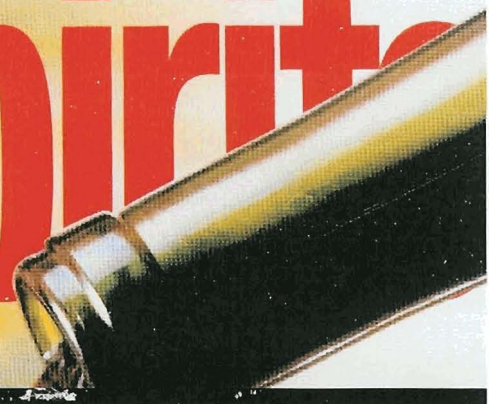


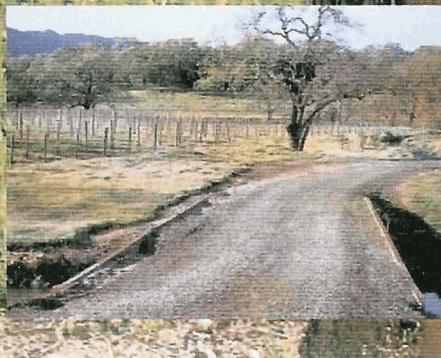
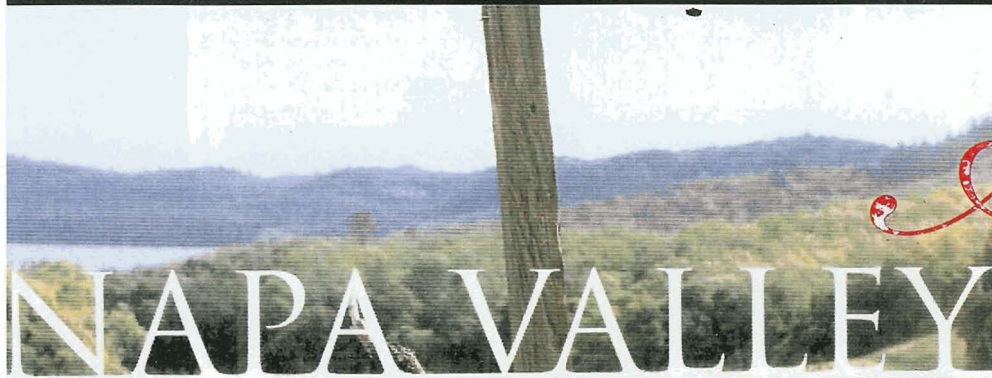
Wine & Spirits

www.wineandspiritsmagazine.com

JUNE 2003



BY ROD SMITH



ALTAMURA VINEYARDS & WINERY

Altamura wines argue convincingly for Wooden Valley's viticultural character as well as its historical ties to the valley. The 400-acre ranch has been in Frank and Karen Altamura's family since 1855. Their 80 acres of vines, about two-thirds Cabernet Sauvignon and the rest Sangiovese, were planted in the late sixties on St. George rootstock (no phylloxera problem) and are mostly dry-farmed. The grapes went to Mondavi for many years while Frank Altamura gained cellar experience working for Napa Valley wineries such as Sterling, Trefethen, and Caymus until 1985; after that he turned full-time to his own wines. The Altamura estate currently produces around 3,000 cases of Cabernet each year and 1,200 cases of Sangiovese.